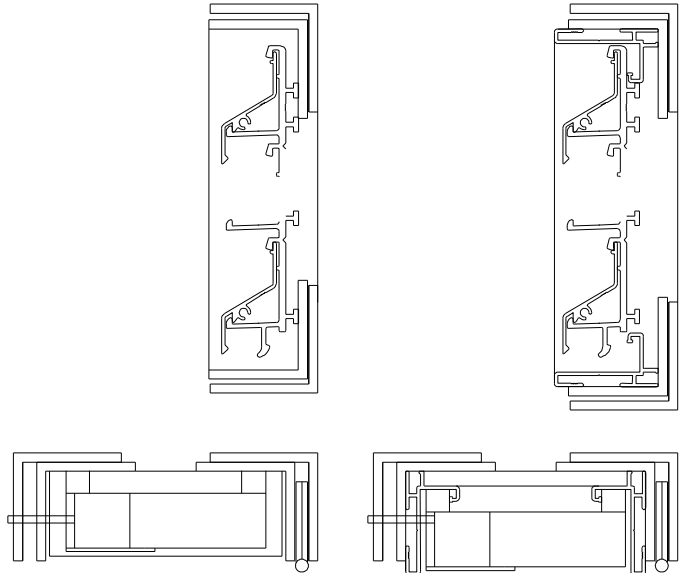


# Ikon

## IKL33 Hinged louvre



### Product description

Butt hinged side hung opening panel complete with budget locking.

Opens out

Frame depth 38.1mm

Blade Centre 34mm . Blade angle 60 degree.

Visual free area 59%. Physical free area 43.5%.

Louvre element tested to EN 13030:2002

BSRIA Test report 52719/1

Results of testing of the louvre element only shown.

### Options

Standard RAL or BS colours. Anodizing to special order.

Insect mesh

Bird mesh

K factor 22.91		Ce 0.208	
Watertightness	%	Class	Pressure Drop
Velocity 0.0	99.7	A	Face Velocity 0.5
	0.5	A	1.0
	1.0	B	1.5
	1.5	C	2.0
	2.0	D	2.5
	2.5	D	3.0
			13.75
			30.93
			54.98
			85.91
			123.71

Performance: airflow, louvre with insect mesh

